

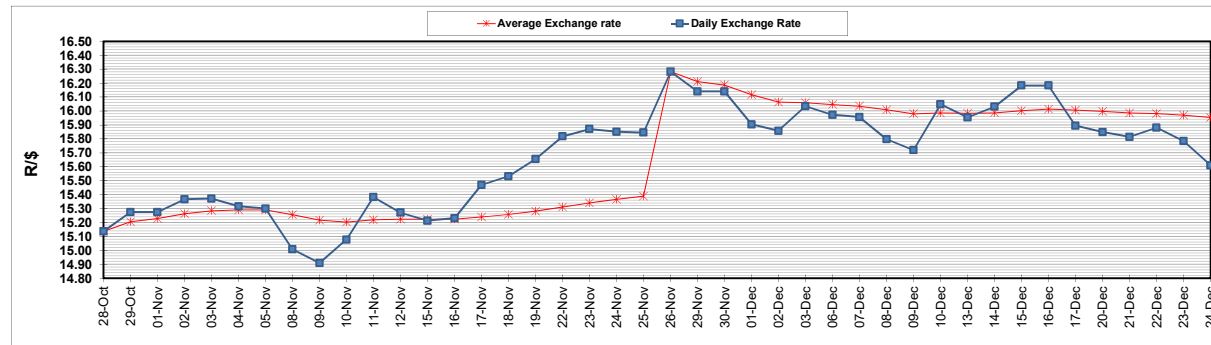
	PETROL 95 ULP	PETROL 93 ULP & LRP	DIESEL 0.05%	DIESEL 0.005%	ILL. PAR.
GAUTENG PUMP PRICE (SA c/l) AS FROM 01/12/2021	2,029.000	2,007.000	-	-	-
WHOLESALE PRICE (SA c/l) AS FROM 01/12/2021	-	-	1,792.480	1,797.880	1,167.688
SINGLE NATIONAL MAXIMUM RETAIL PRICE	-	-	-	-	1,489.000
BASIC FUEL PRICE - 24/12/2021 (SA c/l)	916.057	903.327	882.187	885.082	871.693
PRESS RELEASE CONTRIBUTION TO BFP 01/12/2021 - 24/12/2021 (SA c/l)	973.670	961.670	955.630	961.030	946.128
UNIT OVER/(UNDER) RECOVERY - 24/12/2021 (SA c/l)	57.613	58.343	73.443	75.948	74.435
AVERAGE BASIC FUEL PRICE 26/11/2021 - 24/12/2021	891.840	876.558	874.547	878.179	865.926
AVERAGE UNIT OVER/(UNDER) RECOVERY 26/11/2021 - 24/12/2021	76.607	79.890	75.655	77.137	75.345

ANALYSIS MOVEMENT OF AVERAGE OVER/(UNDER) RECOVERY

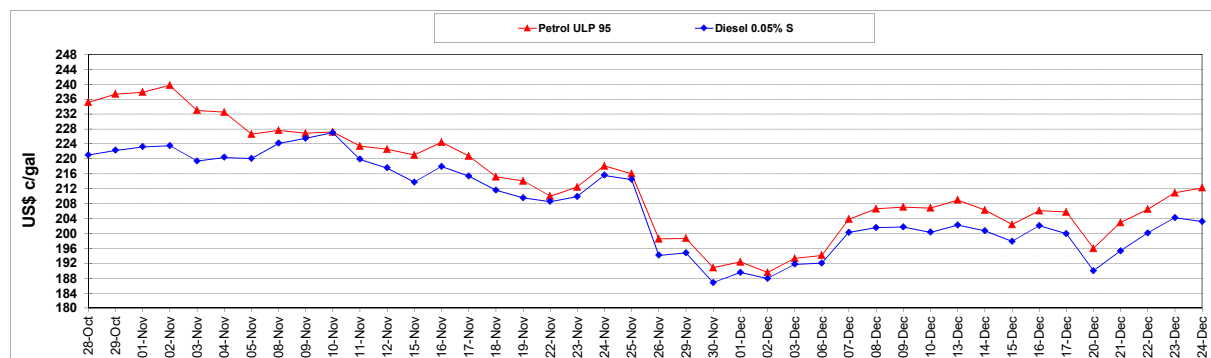
	PETROL 95	PETROL 93	DIESEL 0.05%	DIESEL 0.005%	ILL. PAR.
- MOVEMENT IN INTERNATIONAL PRODUCT PRICES	108.175	110.916	106.609	108.221	105.995
- MOVEMENT IN EXCHANGE RATE	(31.568)	(31.027)	(30.955)	(31.084)	(30.650)
AVERAGE UNIT OVER/(UNDER) RECOVERY 26/11/2021 - 24/12/2021	76.607	79.890	75.655	77.137	75.345

R/\$ EXCHANGE RATE - (R/\$15.6100 - 24/12/2021)

EXCHANGE RATE USED IN BASIC FUEL PRICE



INTERNATIONAL PRODUCT PRICES OF BASKET USED IN BASIC FUEL PRICE



BASIC FUEL PRICE IN SA CENTS PER LITRE

